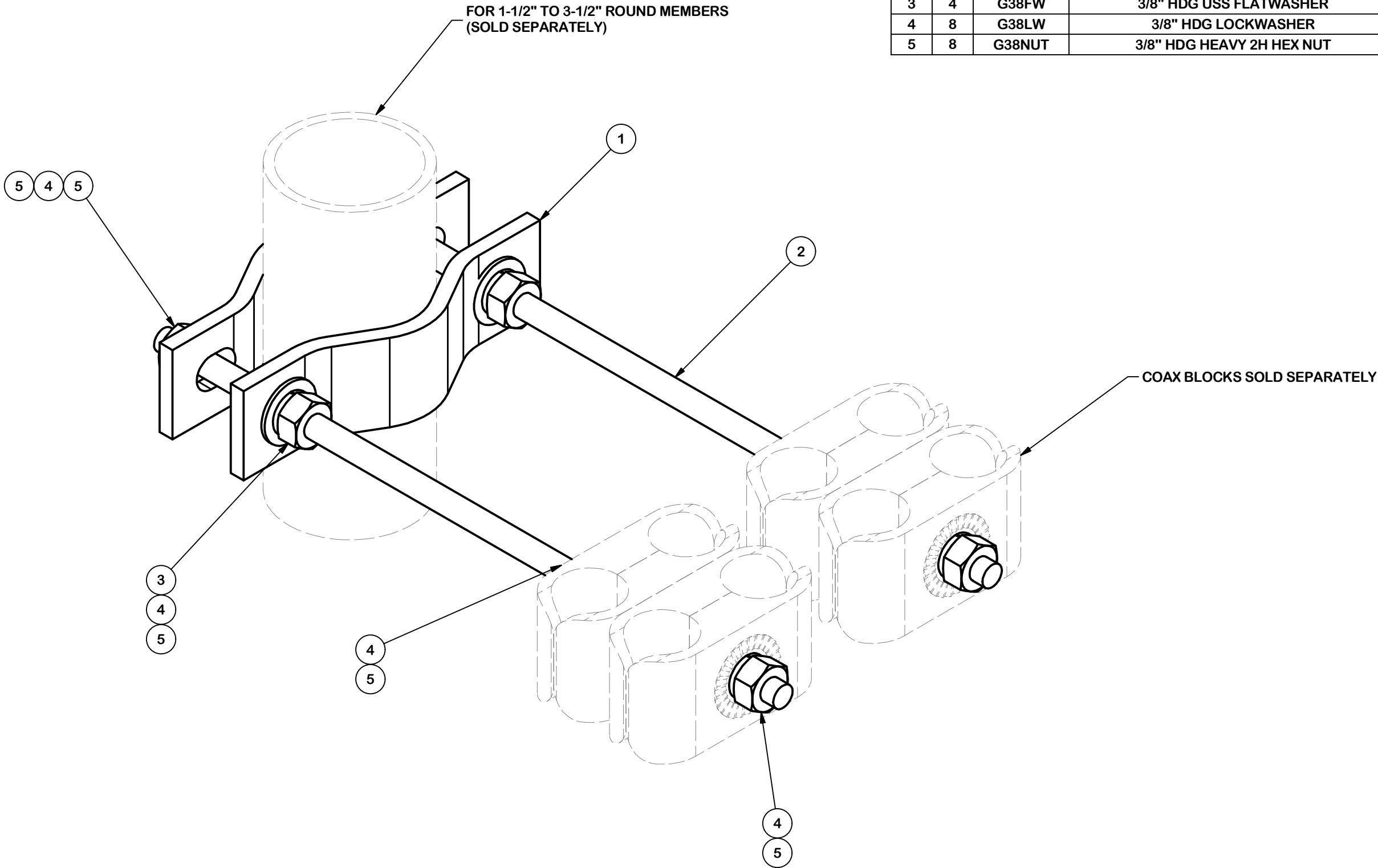


PARTS LIST						
ITEM	QTY	PART NO.	PART DESCRIPTION	LENGTH	UNIT WT.	NET WT.
1	2	ACP	4-1/16" CLAMP HALF, 1/4" THK.	5 3/4 in	0.65	1.31
2	2	G38R-12	3/8" x 12" THREADED ROD (HDG.)		0.38	0.75
3	4	G38FW	3/8" HDG USS FLATWASHER		0.01	0.05
4	8	G38LW	3/8" HDG LOCKWASHER		0.01	0.05
5	8	G38NUT	3/8" HDG HEAVY 2H HEX NUT		0.03	0.27
					TOTAL WT. #	6.94



**TOLERANCE NOTES**

TOLERANCES ON DIMENSIONS, UNLESS OTHERWISE NOTED ARE:  
SAWED, SHEARED AND GAS CUT EDGES ( $\pm 0.030''$ )  
DRILLED AND GAS CUT HOLES ( $\pm 0.030''$ ) - NO CONING OF HOLES  
LASER CUT EDGES AND HOLES ( $\pm 0.010''$ ) - NO CONING OF HOLES  
BENDS ARE  $\pm 1/2$  DEGREE  
ALL OTHER MACHINING ( $\pm 0.030''$ )  
ALL OTHER ASSEMBLY ( $\pm 0.060''$ )

PROPRIETARY NOTE:  
THE DATA AND TECHNIQUES CONTAINED IN THIS DRAWING ARE PROPRIETARY INFORMATION OF VALMONT INDUSTRIES AND CONSIDERED A TRADE SECRET. ANY USE OR DISCLOSURE WITHOUT THE CONSENT OF VALMONT INDUSTRIES IS STRICTLY PROHIBITED.

DESCRIPTION

PIM BUSTER SMALL CABLE BRACKET

CPD NO.		DRAWN BY	ENG. APPROVAL
		JFS 5/18/2021	
CLASS	SUB	DRAWING USAGE	CHECKED BY
01	01	SHOP	



Locations:  
New York, NY  
Atlanta, GA  
Los Angeles, CA  
Plymouth, IN  
Salem, OR  
Dallas, TX

Engineering  
Support Team:  
1-888-753-7446

PART NO.	ACP-PMB
DWG. NO.	ACP-PMB